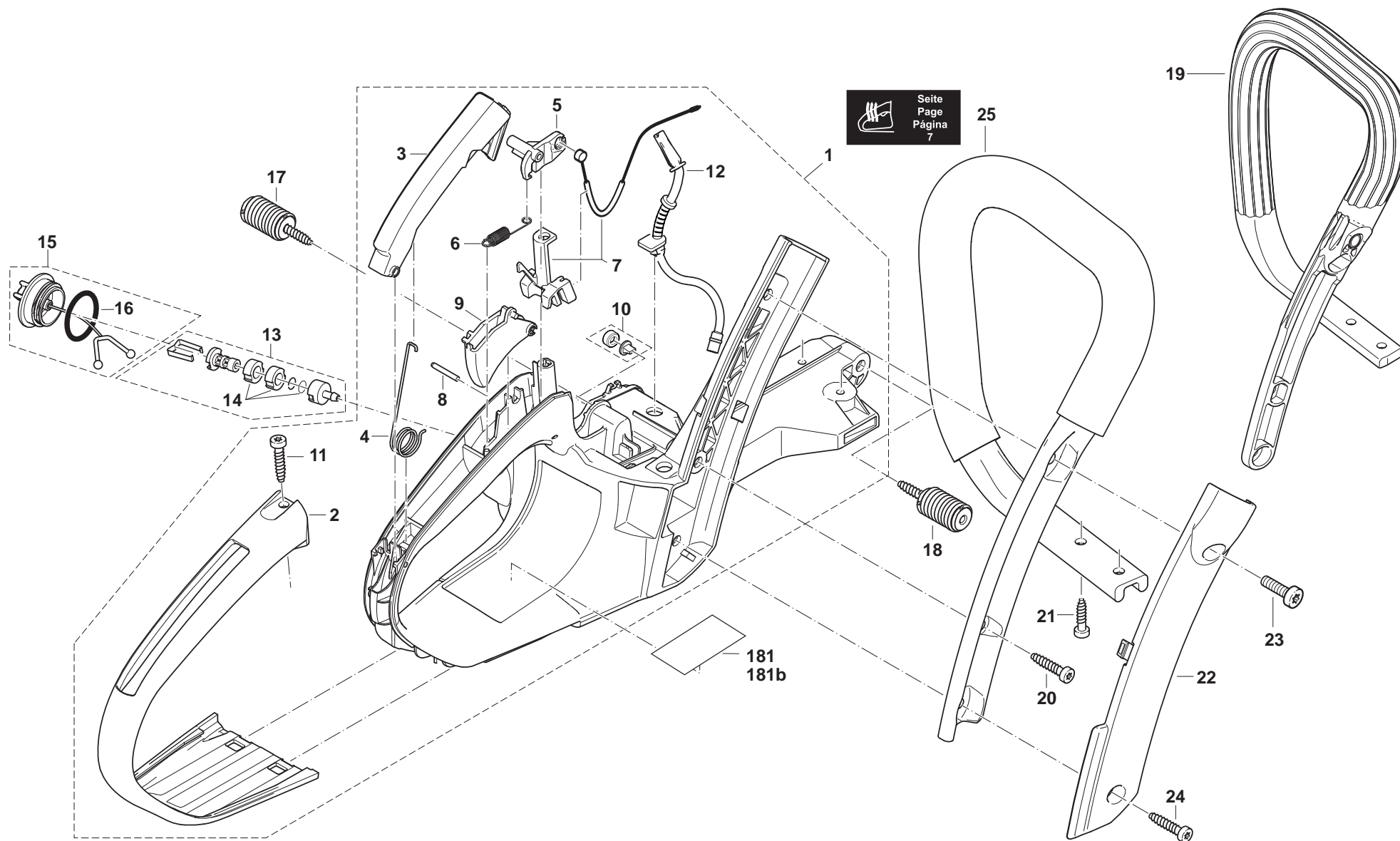


DCS4630, DCS5030,
DCS5031, DCS5032, EA5000P,
EA5001P, MEA5000G, CL500

1

Kraftstofftank, Bügelgriff
Fuel tank, tubular grip
Réserv. carburant, poignée tubulaire
Depósito de combustible, mango tubular

Makita[®]

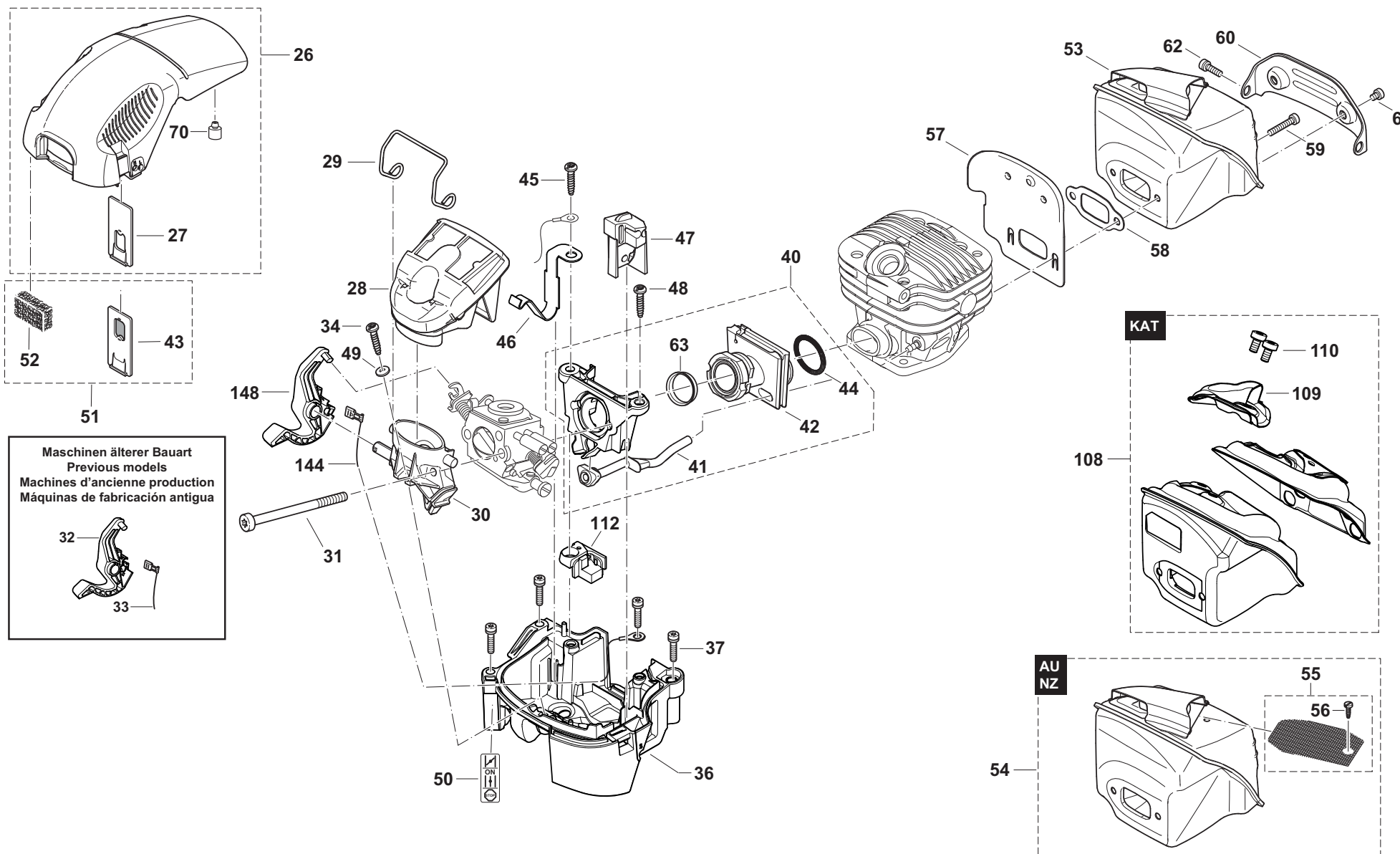


DCS4630, DCS5030,
DCS5031, DCS5032, EA5000P,
EA5001P, MEA5000G, CL500

2

Abdeckhaube, Luftfilter, Schalldämpfer
Hood, air filter, muffler
Capot protecteur, filtre à air, pot d'échappement
Cubierta protectora, filtro de aire, silencioso

Makita

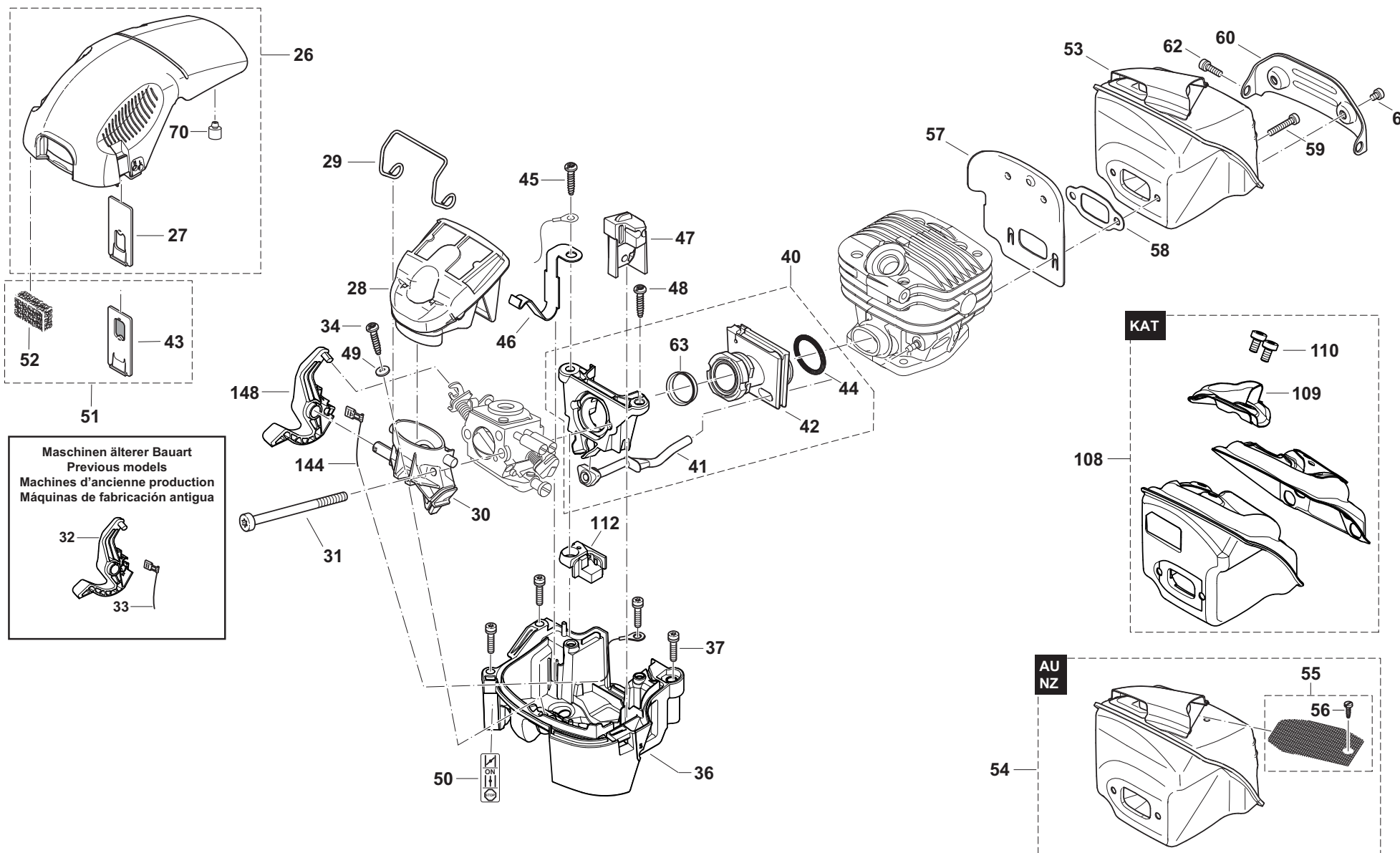


DCS4630, DCS5030,
DCS5031, DCS5032, EA5000P,
EA5001P, MEA5000G, CL500

2

Abdeckhaube, Luftfilter, Schalldämpfer
Hood, air filter, muffler
Capot protecteur, filtre à air, pot d'échappement
Cubierta protectora, filtro de aire, silencioso

Makita



Maschinen älterer Bauart
Previous models
Machines d'ancienne production
Máquinas de fabricación antigua

32
33

KAT

110
109
108

AU
NZ

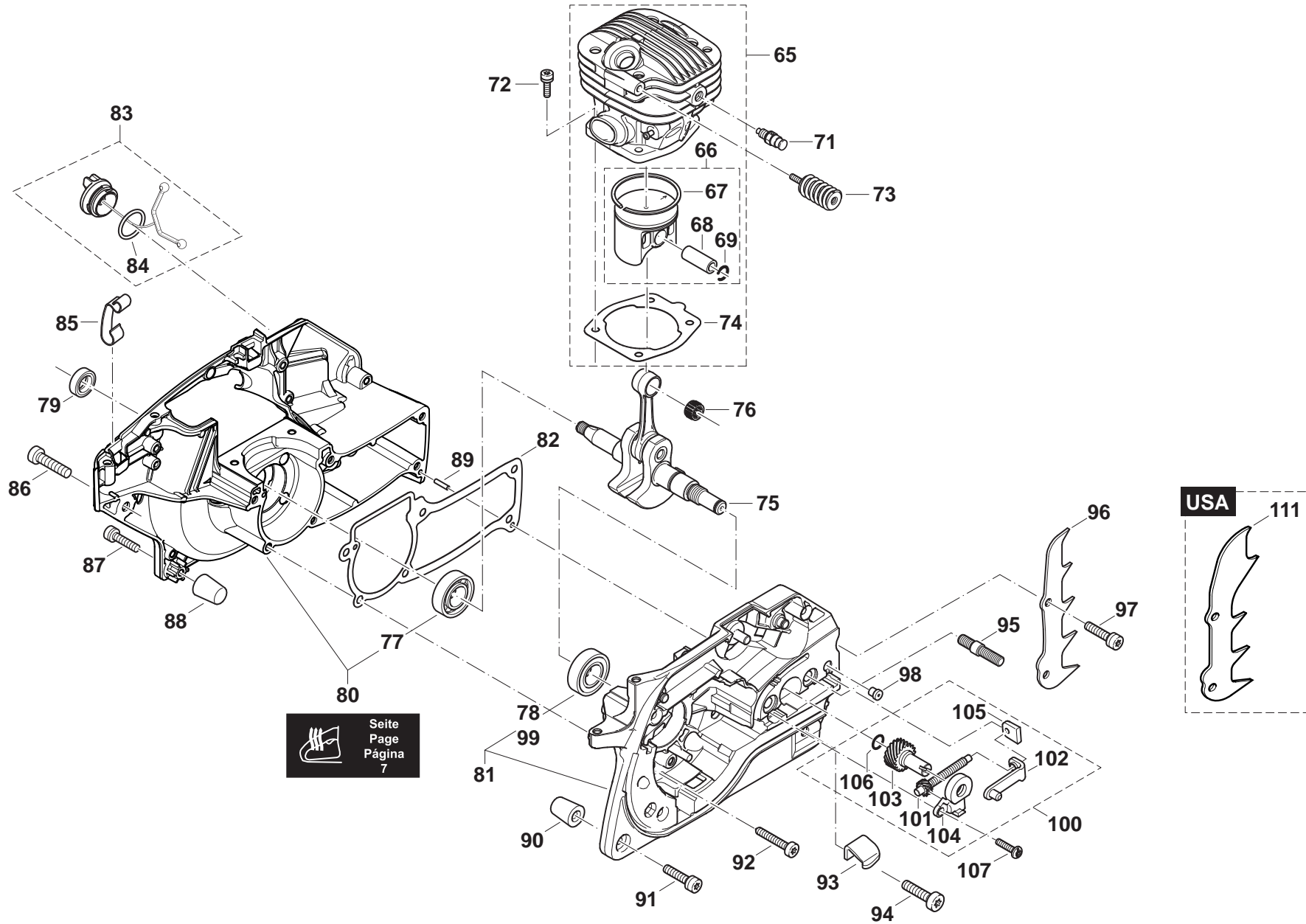
55
56

54

DCS4630, DCS5030,
DCS5031, DCS5032, EA5000P,
EA5001P, MEA5000G, CL500

3

Zylinder, Kurbelgehäuse
Cylinder, crankcase
Cylindre, carter-vilebrequin
Cilindro, cárter cigüeñal

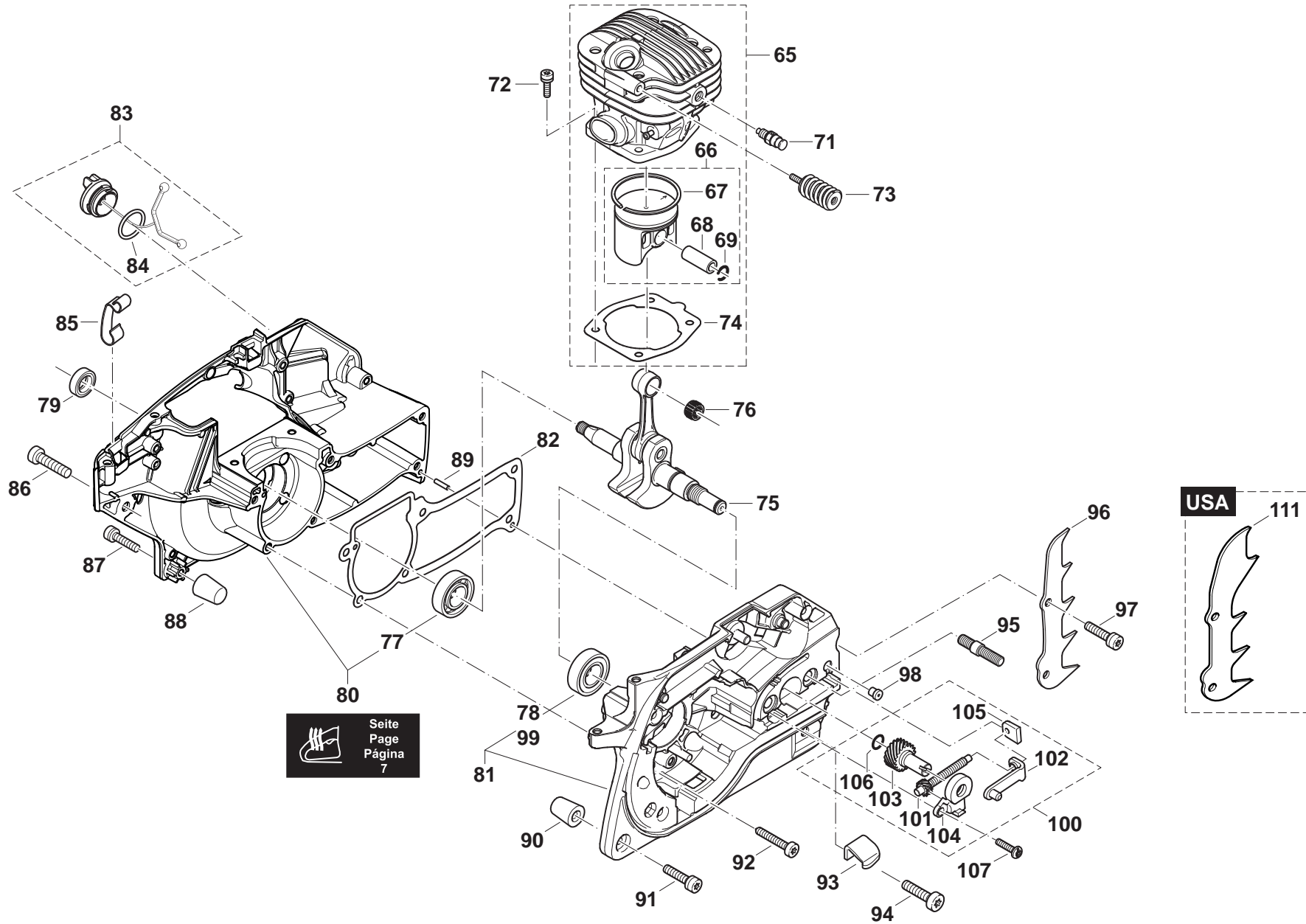


Seite
Page
Página
7

DCS4630, DCS5030,
DCS5031, DCS5032, EA5000P,
EA5001P, MEA5000G, CL500

3

Zylinder, Kurbelgehäuse
Cylinder, crankcase
Cylindre, carter-vilebrequin
Cilindro, cárter cigüeñal



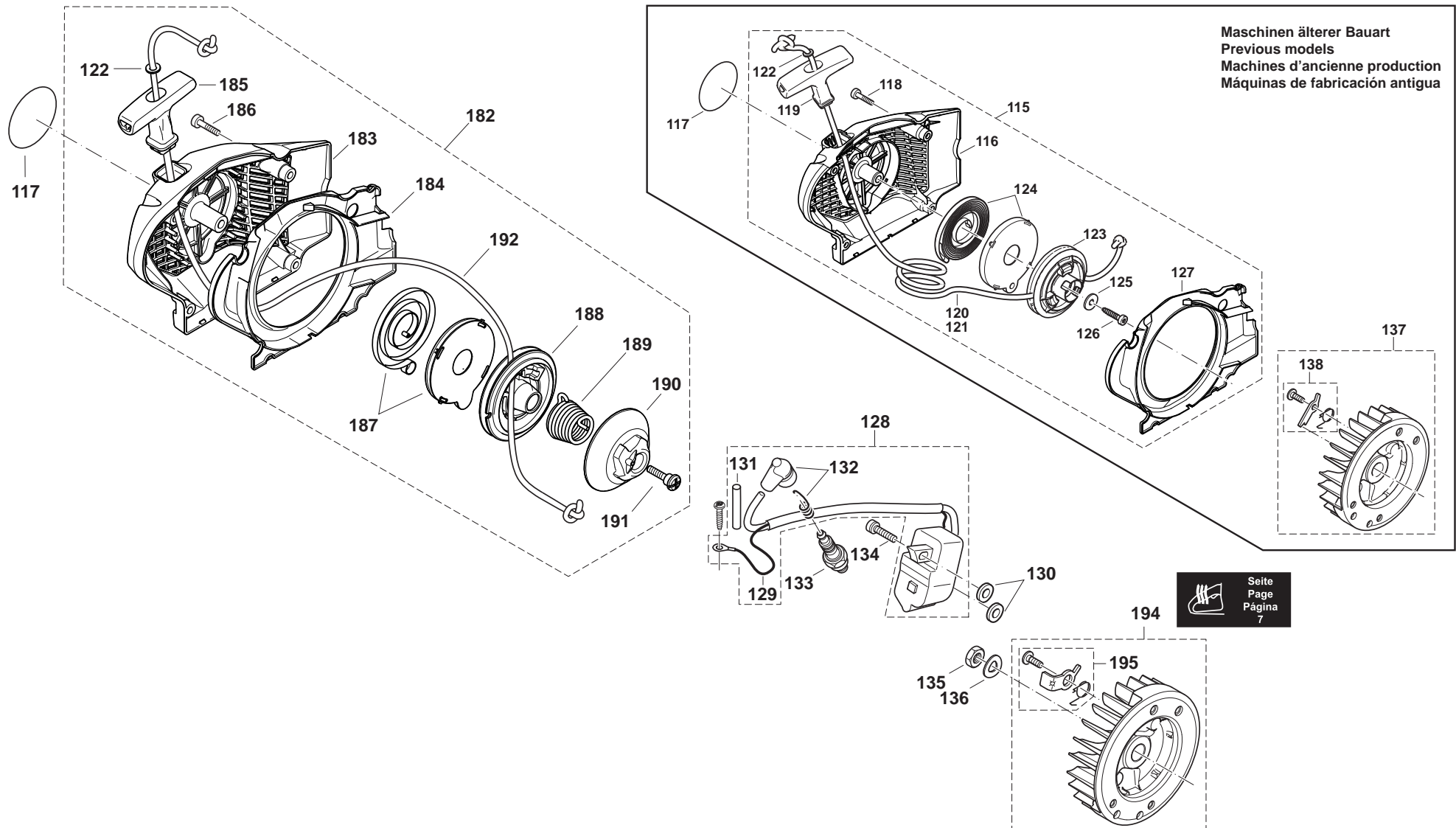
Seite
Page
Página
7

DCS4630, DCS5030,
DCS5031, DCS5032, EA5000P,
EA5001P, MEA5000G, CL500

4

Zündelektronik, Anwerfvorrichtung
Ignition electronics, starter
Allumage électronique, dispositif de démarrage
Bobina encendido, dispositivo de arranque

Makita[®]

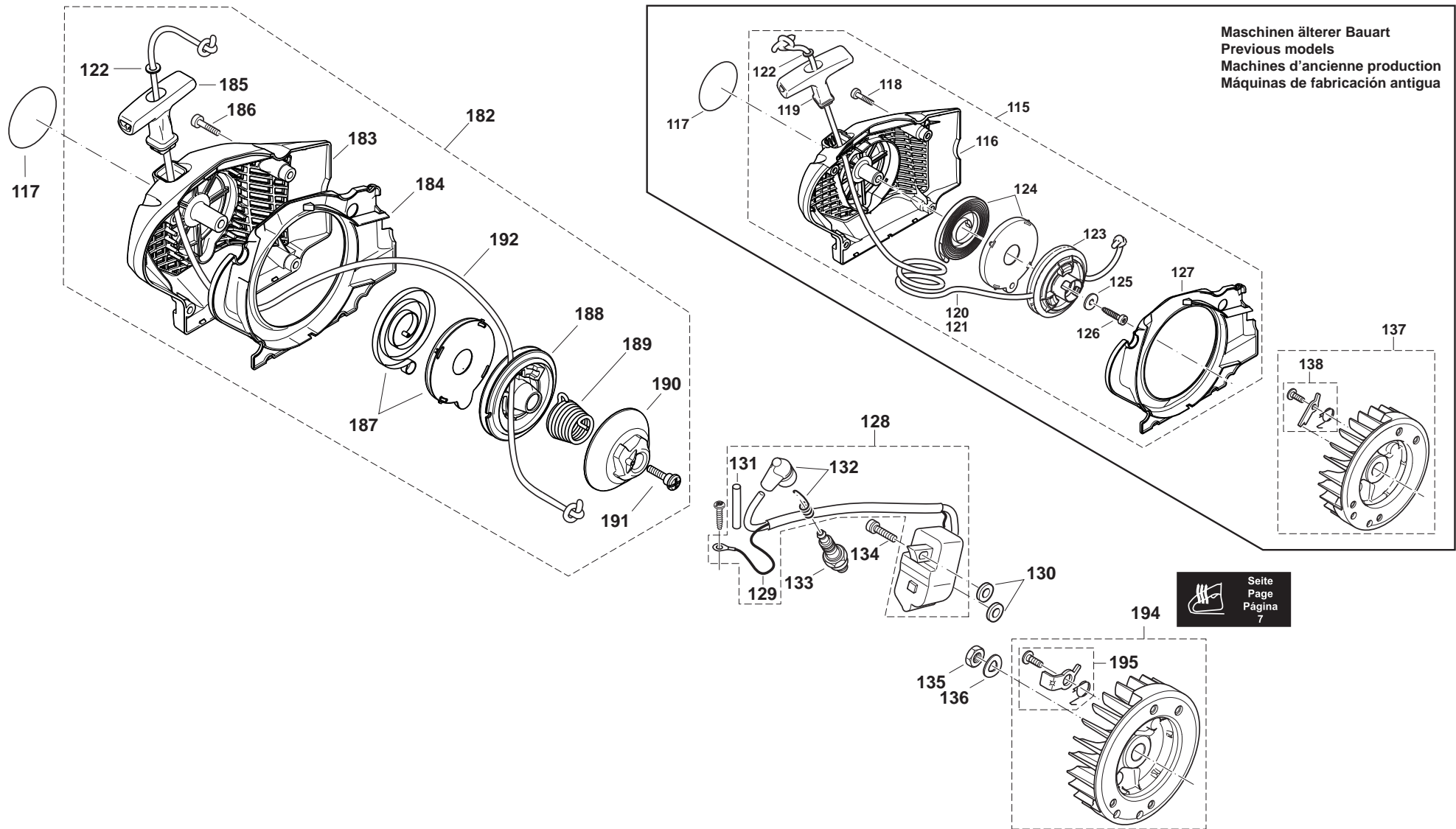


DCS4630, DCS5030,
DCS5031, DCS5032, EA5000P,
EA5001P, MEA5000G, CL500

4

Zündelektronik, Anwerfvorrichtung
Ignition electronics, starter
Allumage électronique, dispositif de démarrage
Bobina encendido, dispositivo de arranque

Makita

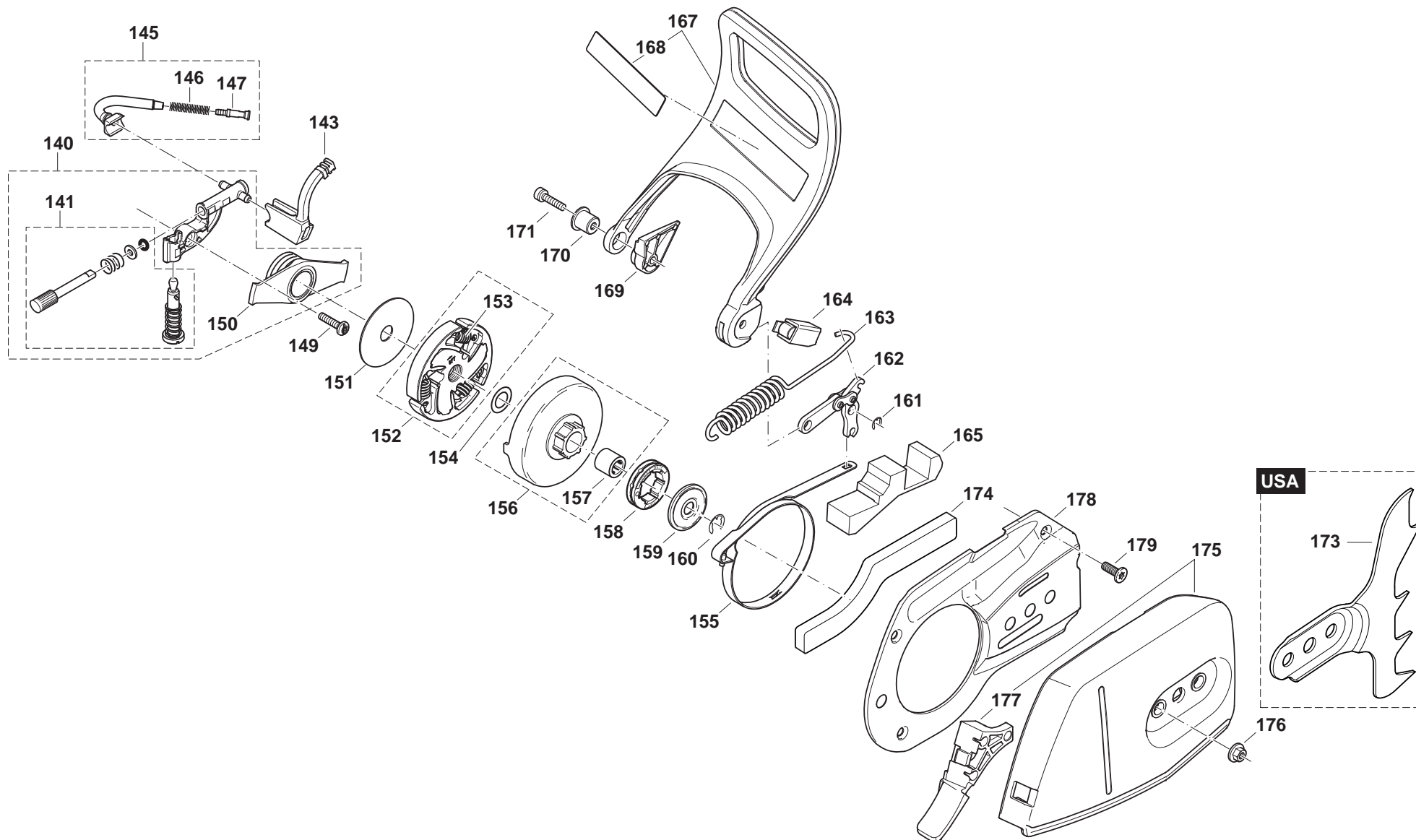


DCS4630, DCS5030,
DCS5031, DCS5032, EA5000P,
EA5001P, MEA5000G, CL500

5

Ölpumpe, Kupplung, Kettenbremse
Oil pump, clutch, chain brake
Pompe à huile, embrayage, frein de chaîne
Bomba de aceite, engrague, freno de cadena

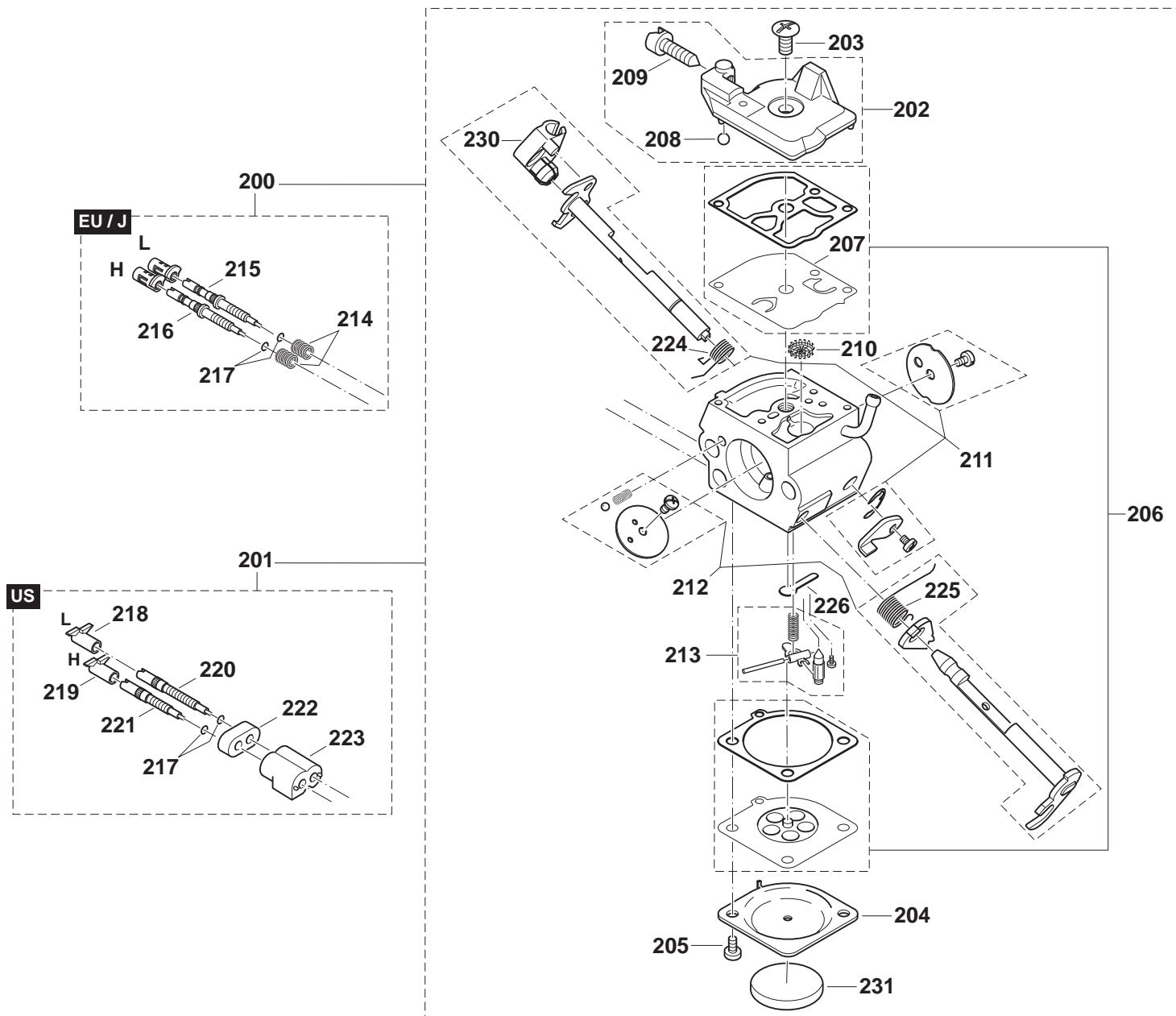
Makita[®]



DCS4630, DCS5030,
DCS5031, DCS5032, EA5000P,
EA5001P, MEA5000G, CL500

6

Vergaser
Carburetor
Carburateur
Carburador

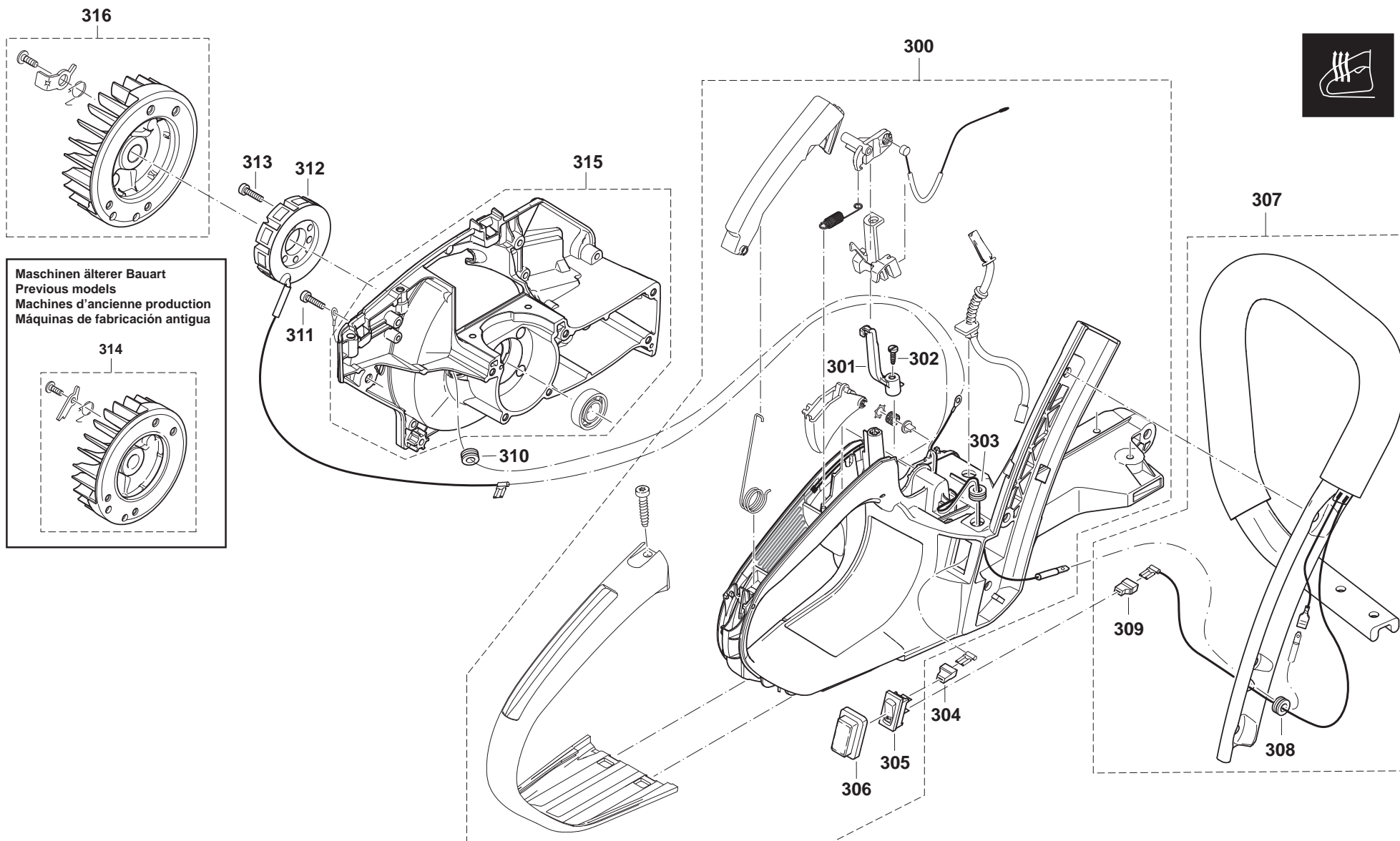


DCS4630, DCS5030,
DCS5031, DCS5032, EA5000P,
EA5001P, MEA5000G, CL500

7

Spezialteile für Ausrüstung mit elektrischer Griffheizung
Special parts for version with electric handle heating
Pièces spéciales pour version avec chauffage de la poignée (électrique)
Piezas especiales por tipo con calefacción eléctrica de mango

Makita[®]



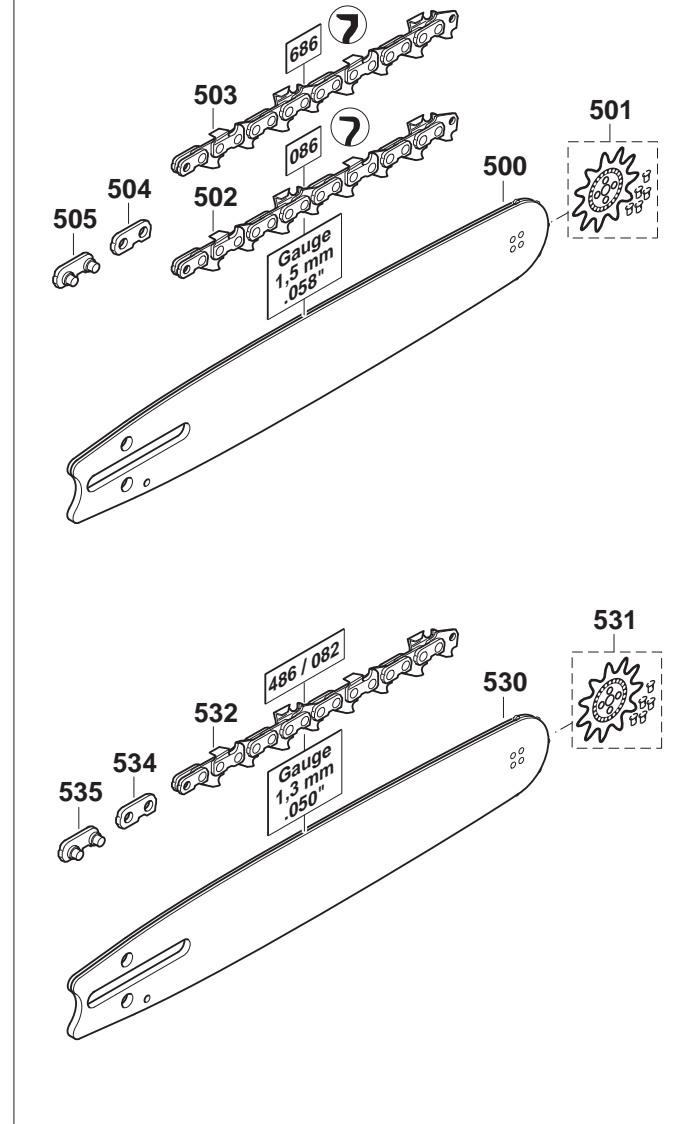
DCS4630, DCS5030,
DCS5031, DCS5032, EA5000P,
EA5001P, MEA5000G, CL500

8

Sägeschienen, Sägeketten, Werkzeug
Guide bars, saw chains, tools
Guide-chaîne, chaînes, outils
Rieles guía, cadenas sierra, herramientas



.325"



3/8"

